

Trigeminal Neuralgia

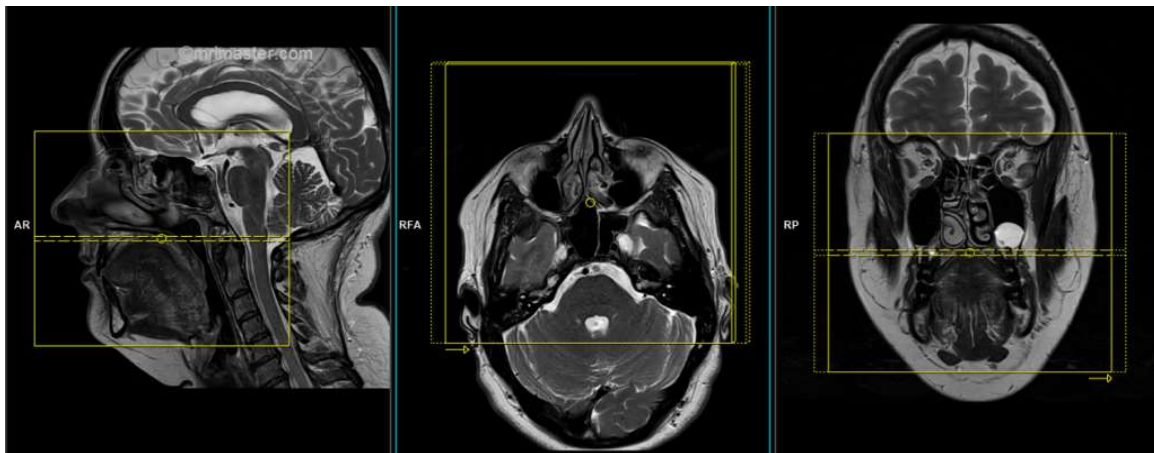
Updated
2/12/2020

Use trigeminal field-of-view (FOV) and angulations as in the images below.
CISS coronal from anterior orbits through 4th ventricles (front/back coverage).
Go to MRIMaster.com for a guide of proper positioning.

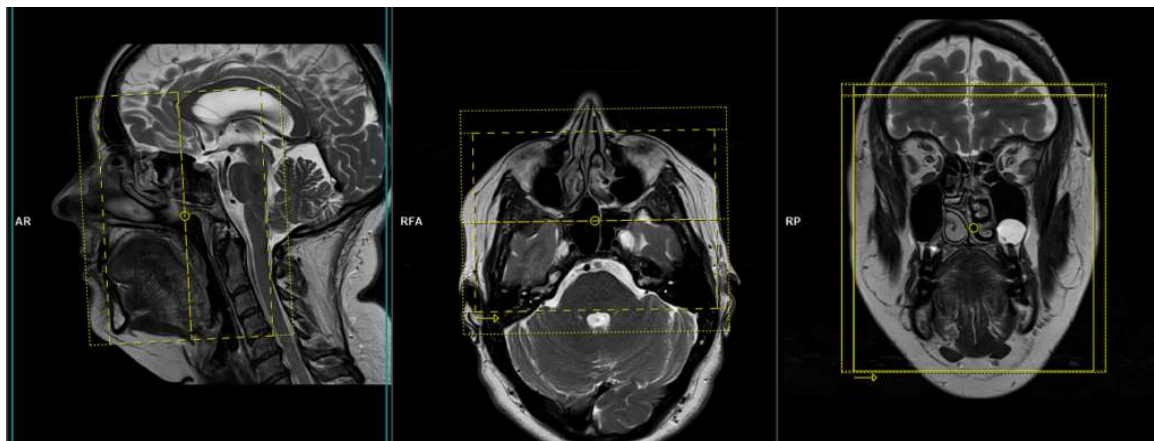
Pulse Sequence	PACS Name	plane	fat sat	slice (mm)	gap (mm)	first slice	Field of View
T1	T1 AX	ax	no	3	0	base	trigeminal
T2	T2 AX	ax	no	3	0	base	
T1	T1 COR	cor	no	3	0	ant	
CISS	CISS AX	ax	no	0.6	0.5	base	
CISS	CISS COR	cor	no	0.6	0.5	ant	

CONTRAST - 2 mL/sec standard dose gadolinium (0.2 mL/kg Clariscan or 0.1 mL/kg Gadavist) followed by 20 mL saline flush.

T1	T1 FS POST AX	ax	yes	3	0	base	trigeminal
T1	T1 FS POST COR	cor	yes	3	0	ant	
T1	T1 POST AX	ax	no	5	1.5	base	whole brain



trigeminal axial FOV and angulation



trigeminal coronal FOV and angulation