

Brachial Plexus

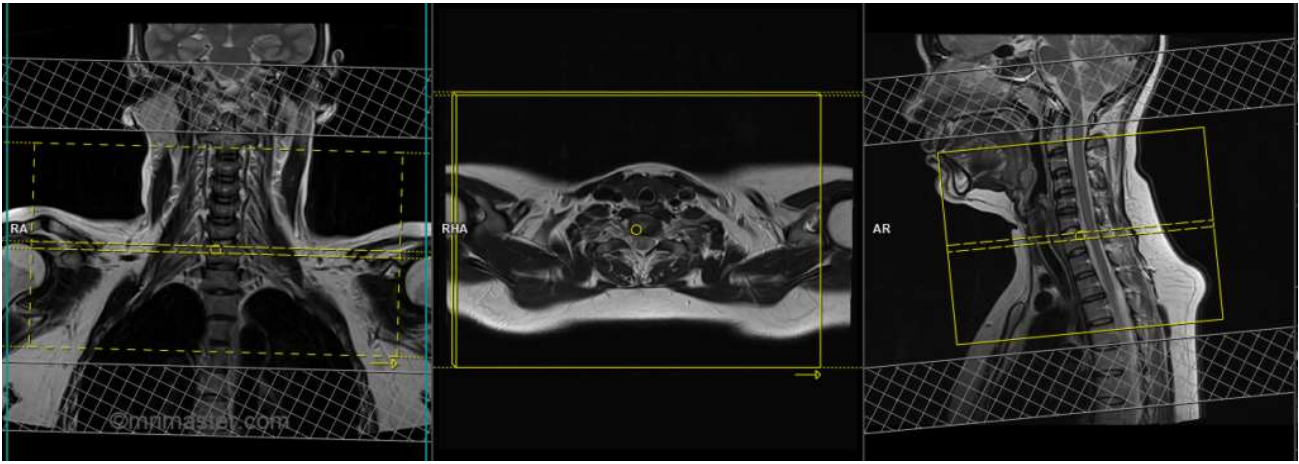
Use brachial plexus field-of-view (FOV) and angulations as in the images on the **NEXT PAGE**.
Go to MRIMaster.com for a guide of proper positioning.

Pulse Sequence	PACS Name	plane	fat sat	slice (mm)	gap (mm)	first slice
T1	T1 COR BILAT	cor	no	5	1.5	ant
STIR	STIR COR BILAT	cor	no	5	1.5	ant
STIR	STIR AX BILAT	ax	no	5	2.5	base
T1	T1 AX RIGHT	ax	no	5	2.5	base
T1	T1 AX LEFT	ax	no	5	2.5	base
T1	T1 SAG RIGHT	sag	no	5	2.5	left
T1	T1 SAG LEFT	sag	no	5	2.5	left

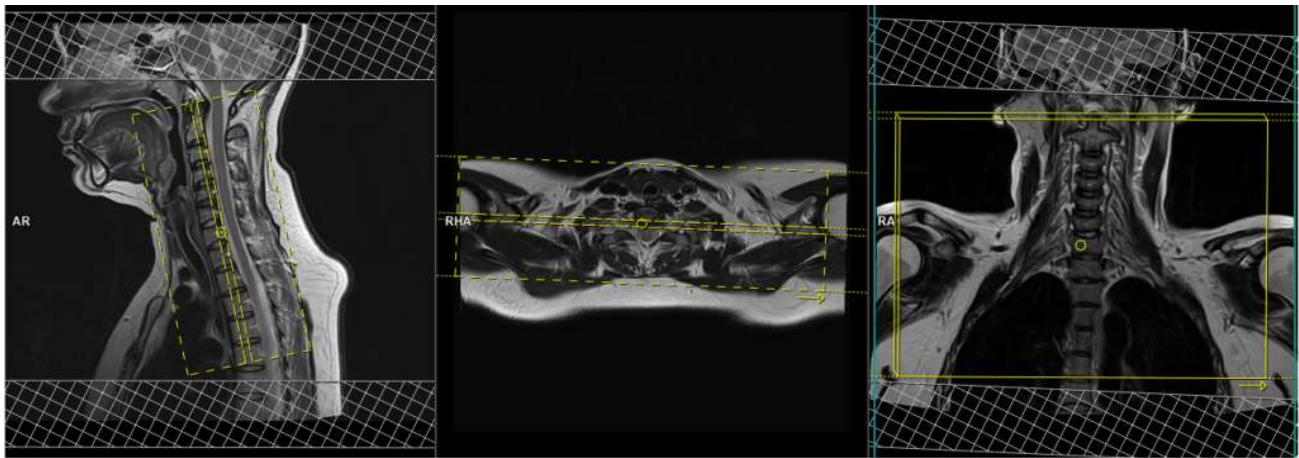
CONTRAST - 2 mL/sec standard dose gadolinium (0.2 mL/kg Clariscan or 0.1 mL/kg Gadavist) followed by 20 mL saline flush.

T1	T1 FS POST AX	ax	yes	5	1.5	base
T1	T1 FS POST COR	cor	yes	5	2.5	ant
T1	T1 FS POST SAG	sag	yes	5	2.5	left

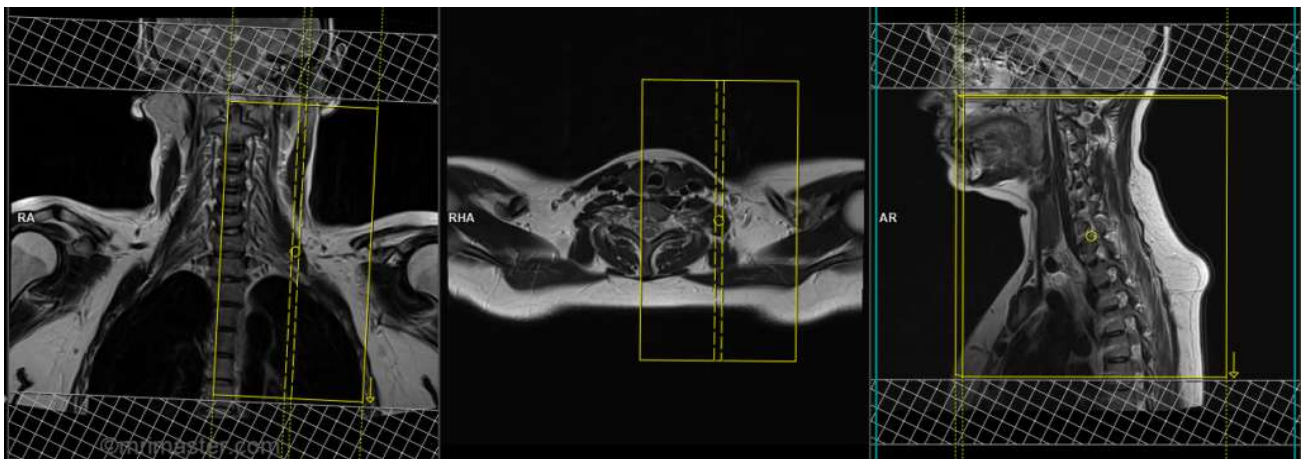
*All post contrast sequences are only of the symptomatic side.



axial FOV & angulation (perpendicular to the spinal cord in the sagittal plane)



coronal FOV & angulation (parallel to the spinal cord in the sagittal plane)



sagittal FOV & angulation (parallel to the spinal cord in the coronal plane)