

MRI Paranasal Sinuses

Updated 11/22/23

Reviewed 05/14/25

Notify a Radiologist if a brain abnormality is present to determine the need for additional sequences.

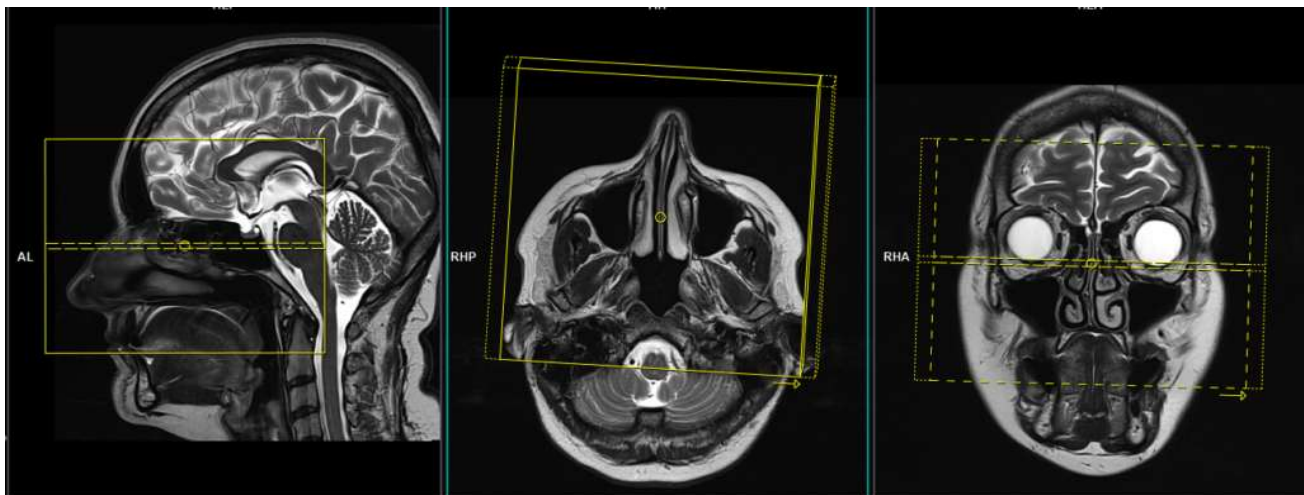
Use sinuses field-of-view (FOV) and angulations as in the images below.

Go to MRIMaster.com for a guide of proper positioning.

Pulse Sequence	PACS Name	plane	fat sat	slice (mm)	gap (mm)	first slice	Field of View
T1	T1 SAG	sag	no	3	0	left	sinuses
T1	T1 AX	ax	no	3	0.9	base	
T1	T1 COR	cor	no	3	0	back	
T2	T2 AX	ax	no	3	0.9	base	
T2	T2 FS COR	cor	yes	3	0	back	

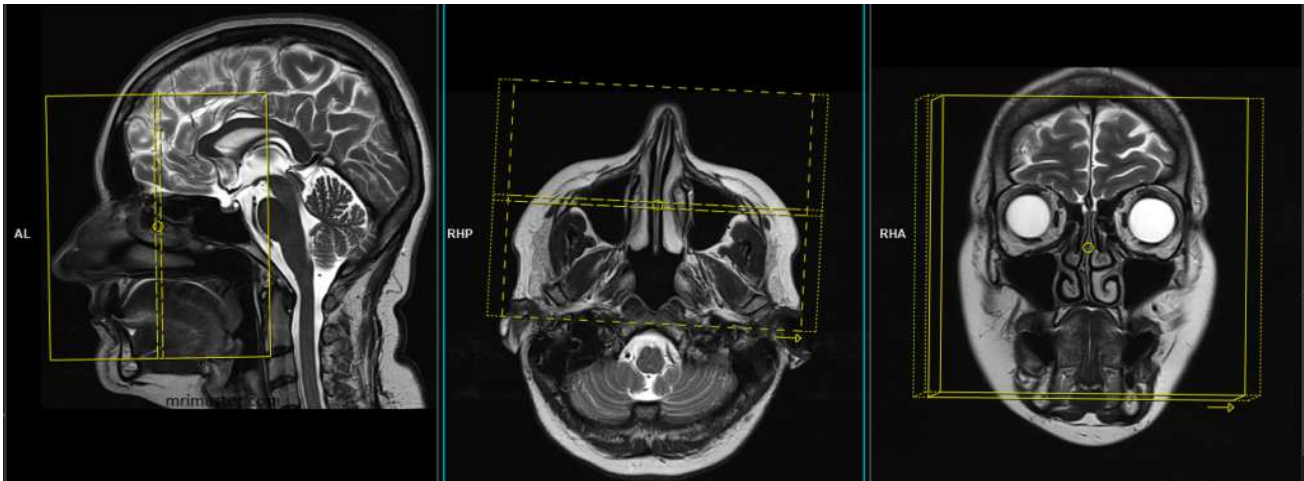
CONTRAST - 2 mL/sec standard dose gadolinium (0.2 mL/kg Clariscan or 0.1 mL/kg Gadavist) followed by 20 mL saline flush.

T1	T1 FS POST AX	ax	yes	3	0.9	base	sinuses
T1	T1 FS POST COR	cor	yes	3	0	back	
T1	T1 POST SAG	sag	no	5	1.5	base	whole brain

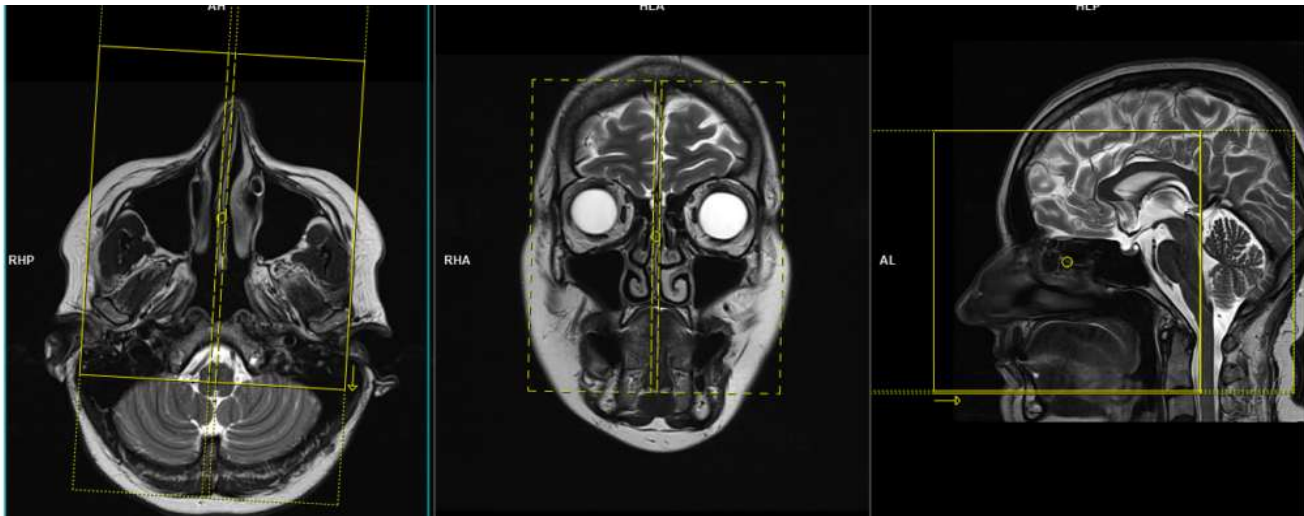


axial FOV and angulation (parallel to the hard palate in the axial plane)

MRI Paranasal Sinuses



coronal FOV and angulation (perpendicular to the hard palate in the sagittal plane)



sagittal FOV and angulation (parallel to the nasal septum in the axial plane)