

# Thumb / UCL

Updated

7/17/2017

Use field-of-view (FOV) and angulations as in the images on the NEXT PAGE.

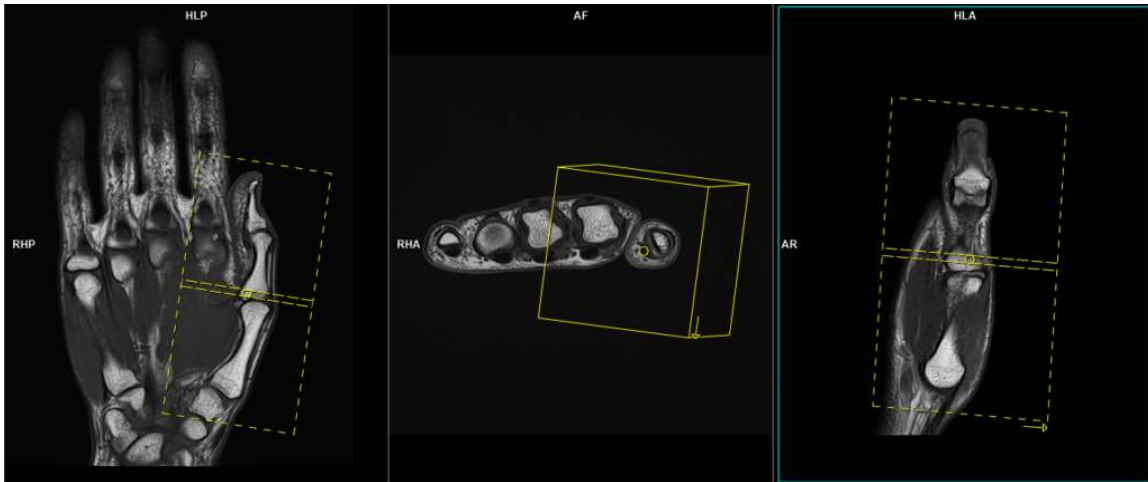
Use sesamoid bones for guide for choosing angles.

Confirm the planes with a MSK Radiologist before proceeding.

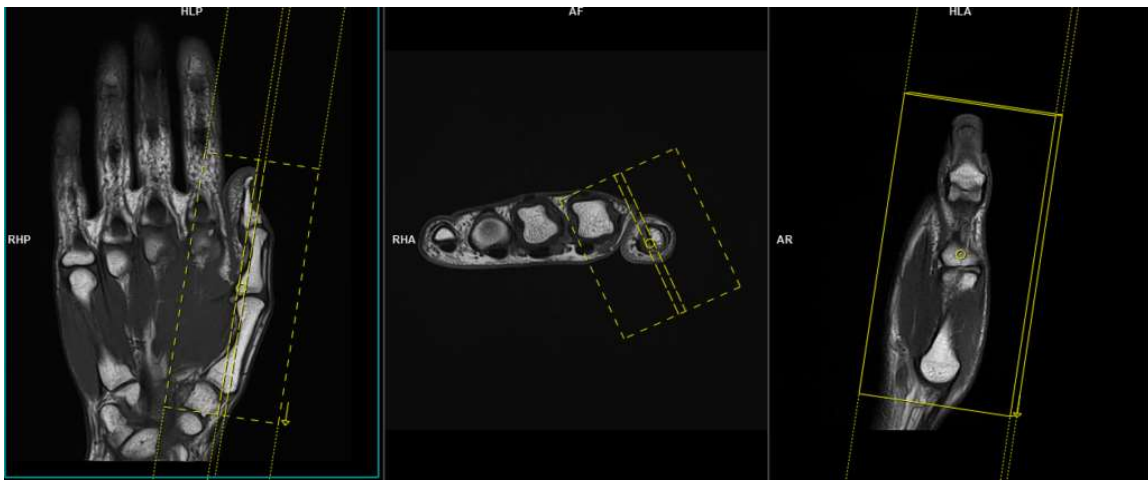
IV contrast is not given for this protocol.

Go to MRIMaster.com for a guide of proper positioning.

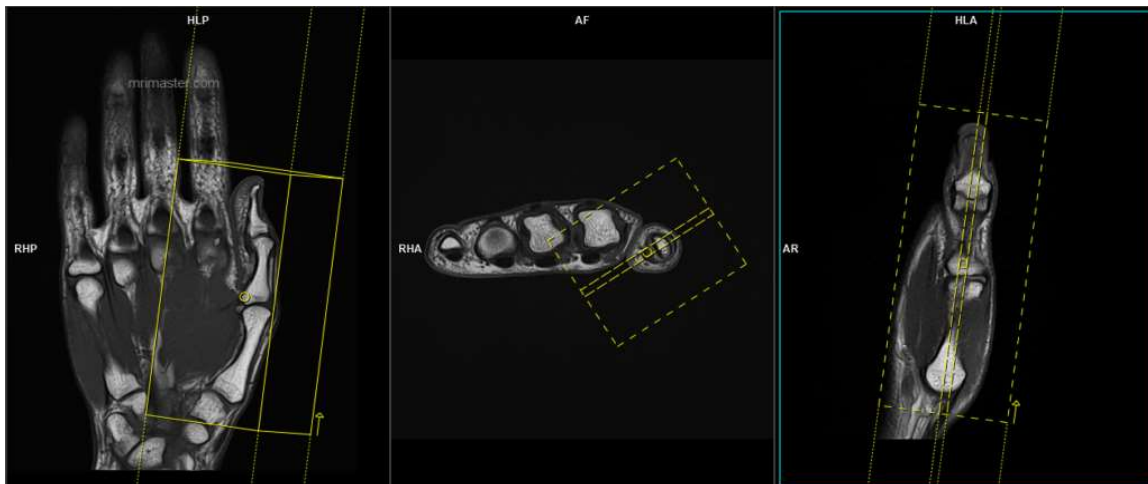
<b>Pulse Sequence</b>	<b>PACS Name</b>	<b>plane</b>	<b>fat sat</b>	<b>slice (mm)</b>	<b>gap (mm)</b>	<b>first slice</b>
T1	T1 AX	ax	no	3	0.3	top
T2	T2 FS AX	ax	yes	3	0.3	top
T1	T1 COR	cor	no	3	0.3	front
T2	T2 COR	cor	no	3	0.3	front
STIR	STIR SAG	sag	no	3	0.3	lateral



axial FOV and angulation (perpendicular to the metacarpal and phalanx bones in the sagittal plane)



coronal FOV and angulation (parallel to the metacarpal and phalanx bones in the sagittal plane)



sagittal FOV and angulation (perpendicular to the pectoralis muscle in the axial plane)