

Sternum

Updated

6/15/2017

Image prone if possible to decrease respiratory motion.

Use field-of-view (FOV) and angulations as in the images on the NEXT PAGE.

Go to MRIMaster.com for a guide of proper positioning.

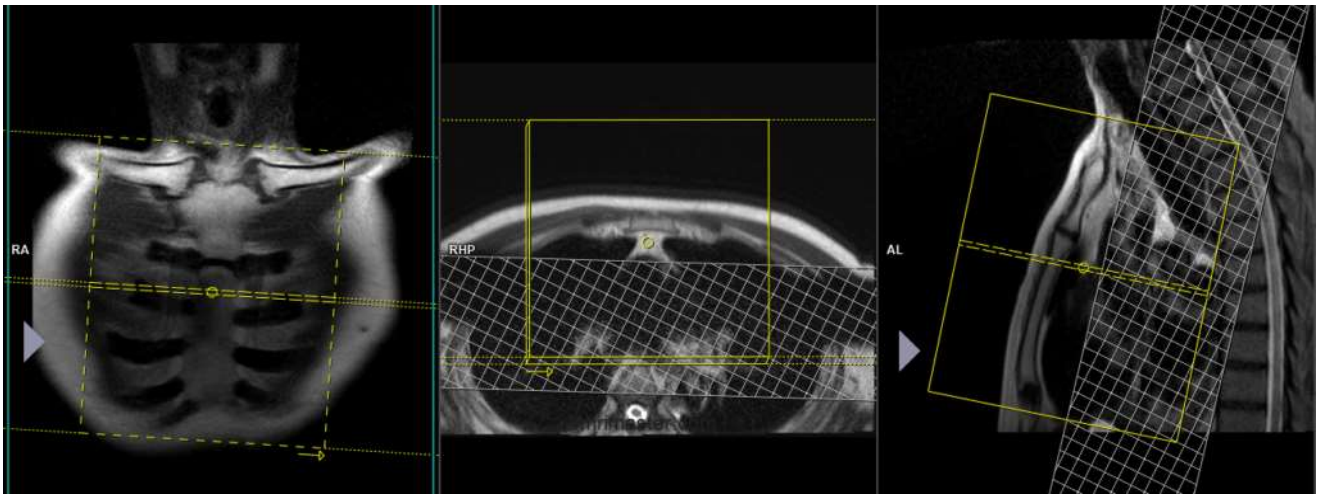
Pulse Sequence	PACS Name	plane	fat sat	slice (mm)	gap (mm)	first slice
T1	T1 AX	ax	no	6	1	top
T2	T2 AX	ax	no	6	1	top
STIR	STIR AX	ax	no	6	1	top
T1	T1 COR	cor	no	2	0.5	front
STIR	STIR COR	cor	no	2	0.5	front
T1	T1 FS SAG	sag	yes	4	1	right

CONTRAST - 2 mL/sec standard dose gadolinium (0.2 mL/kg Clariscan or 0.1 mL/kg Gadavist) followed by 20 mL saline flush.

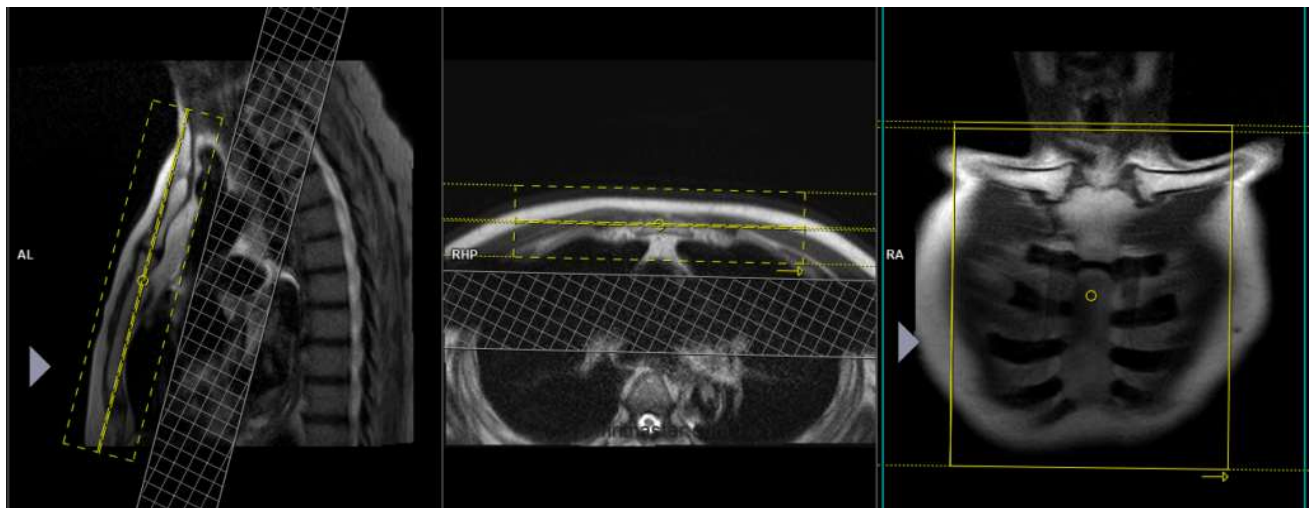
T1	T1 FS POST AX	ax	yes	6	1	top
T1	T1 FS POST SAG	sag	yes	4	1	right

RECON:

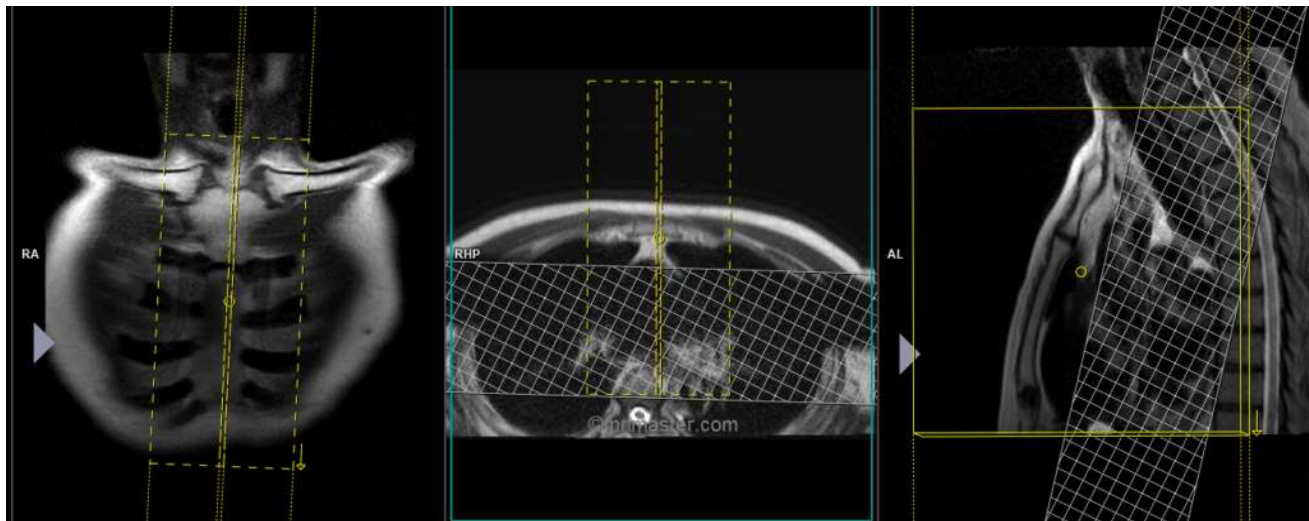
sagittal subtractions



axial FOV and angulation (perpendicular to the sternum in the sagittal plane)



coronal FOV and angulation (parallel to the sternum in the sagittal plane)



sagittal FOV and angulation (parallel to the sternum in the coronal plane)