

Sternoclavicular Joints

Updated

7/30/2023

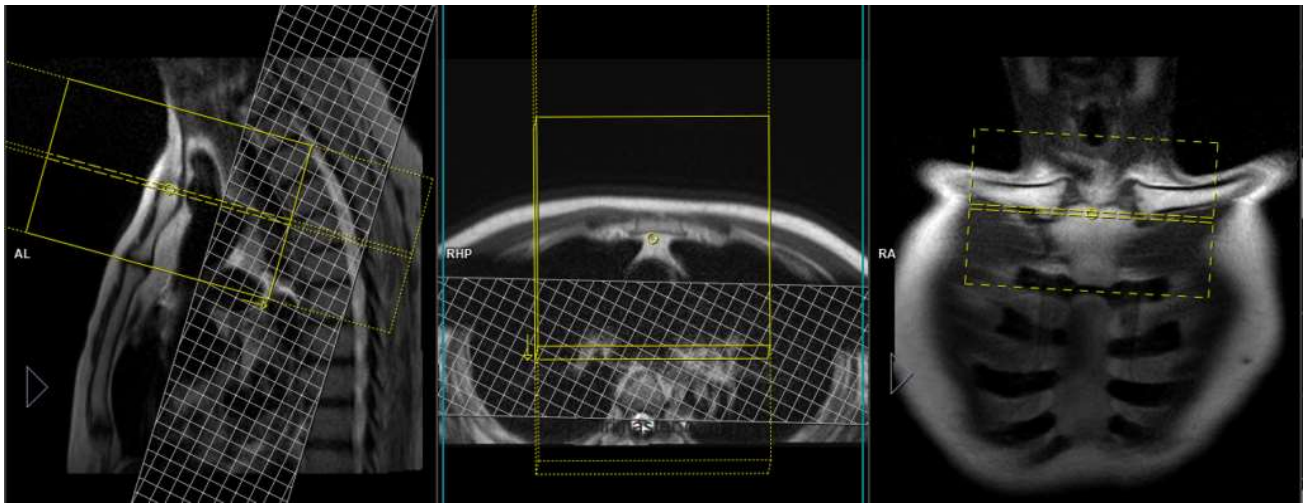
Use field-of-view (FOV) and angulations as in the images on the **NEXT PAGE**.

Go to MRIMaster.com for a guide of proper positioning.

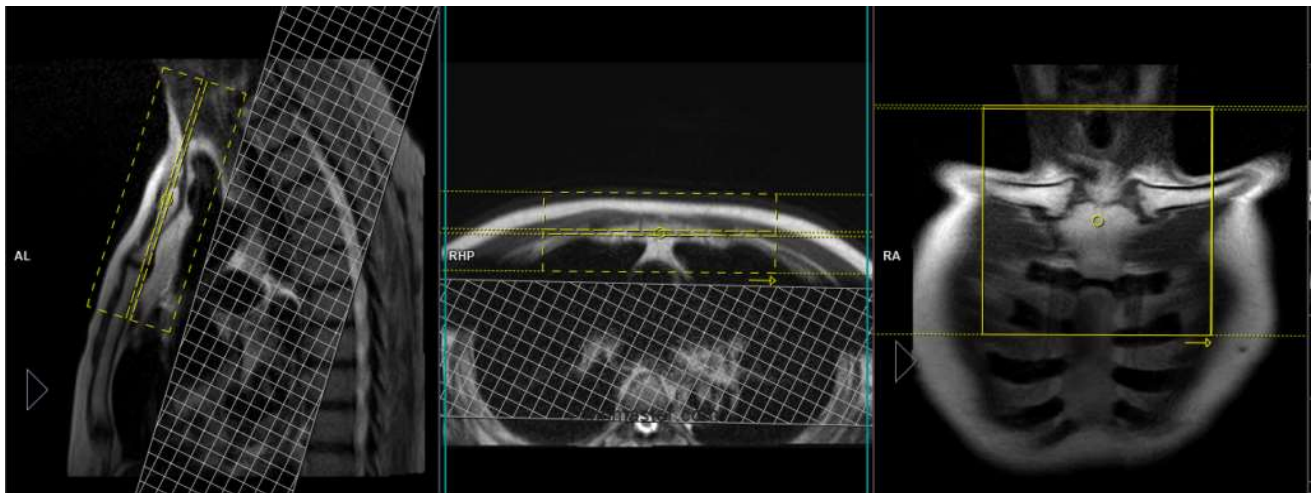
Pulse Sequence	PACS Name	plane	fat sat	slice (mm)	gap (mm)	first slice
T1	T1 SAG	sag	no	3	1	right
STIR	STIR SAG	sag	no	3	1	right
T1	T1 COR	cor	no	3	0.8	front
T2	T2 FS COR	cor	yes	3	0.8	front
T1	T1 AX	ax	no	4	1.5	top
T2	T2 FS AX	ax	yes	4	1.5	top

CONTRAST - 2 mL/sec standard dose gadolinium (0.2 mL/kg Clariscan or 0.1 mL/kg Gadavist) followed by 20 mL saline flush.

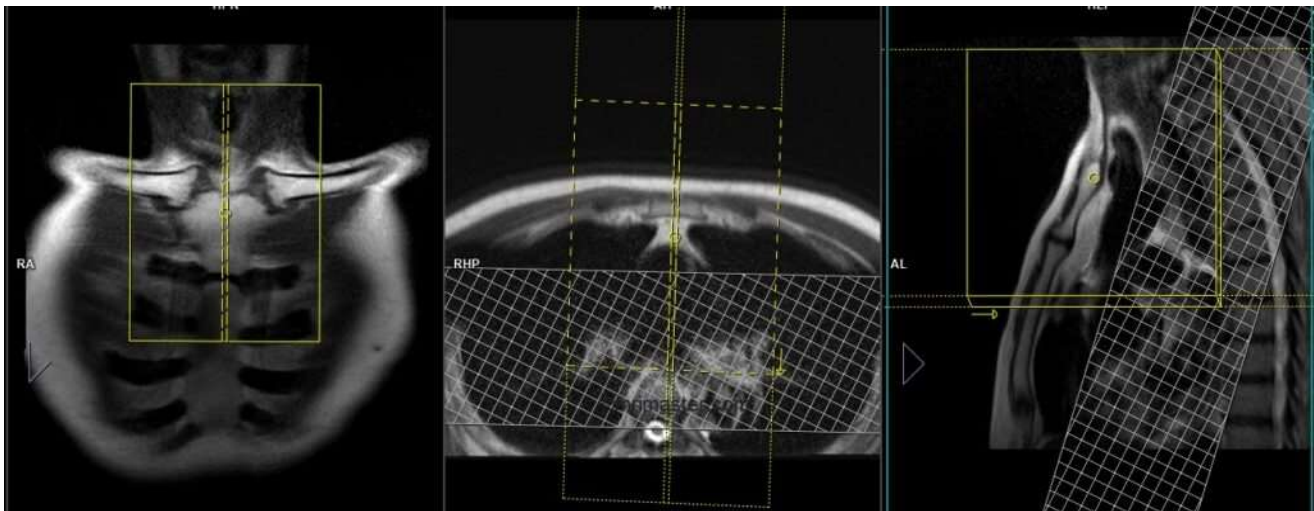
T1	T1 FS POST AX	ax	yes	4	1.5	top
T1	T1 FS POST COR	cor	yes	3	1	front
T1	T1 FS POST SAG	sag	yes	3	0.8	right



axial FOV and angulation (perpendicular to the manubrium in the sagittal plane)



coronal FOV and angulation (parallel to the manubrium in the sagittal plane)



sagittal FOV and angulation (parallel to the manubrium in the coronal plane)