

Knee (Routine, MARS & Arthrogram)

For an order for without and with IV imaging, please confirm that the exam is not for tumor or arthrogram before proceeding.

Use field-of-view (FOV) and angulations as in the images on the NEXT PAGE.

Go to MRIMaster.com for a guide of proper positioning.

Routine Knee:

Pulse Sequence	PACS Name	plane	fat sat	slice (mm)	gap (mm)	first slice
PD	PD FS AX	ax	yes	4	1	top
T1	T1 COR	cor	no	4	0.5	front
DESS/PD	DESS FS AX / PD FS COR	COR	yes	1	0.5	top
PD	PD FS SAG	sag	yes	4	0.5	lateral
T2	T2 SAG	sag	no	4	0.5	lateral

CONTRAST - 2 mL/sec standard dose gadolinium (0.2 mL/kg Clariscan or 0.1 mL/kg Gadavist) followed by 20 mL saline flush.

T1	T1 FS POST AX	ax	yes	4	0.5	top
T1	T1 FS POST COR	cor	yes	4	0.5	front

MARS:

Pulse Sequence	PACS Name	plane	fat sat	slice (mm)	gap (mm)	first slice
PD	PD AX	ax	no	4	1	top
STIR	STIR AX	ax	no	4	1	front
T1	T1 COR	cor	no	4	1	front
PD	PD COR	cor	no	4	1	front
T2	T2 COR	cor	no	4	1	front
PD	PD SAG	sag	no	4	1	lateral
T1	T2 SAG	sag	no	4	1	lateral

CONTRAST - 2 mL/sec standard dose gadolinium (0.2 mL/kg Clariscan or 0.1 mL/kg Gadavist) followed by 20 mL saline flush.

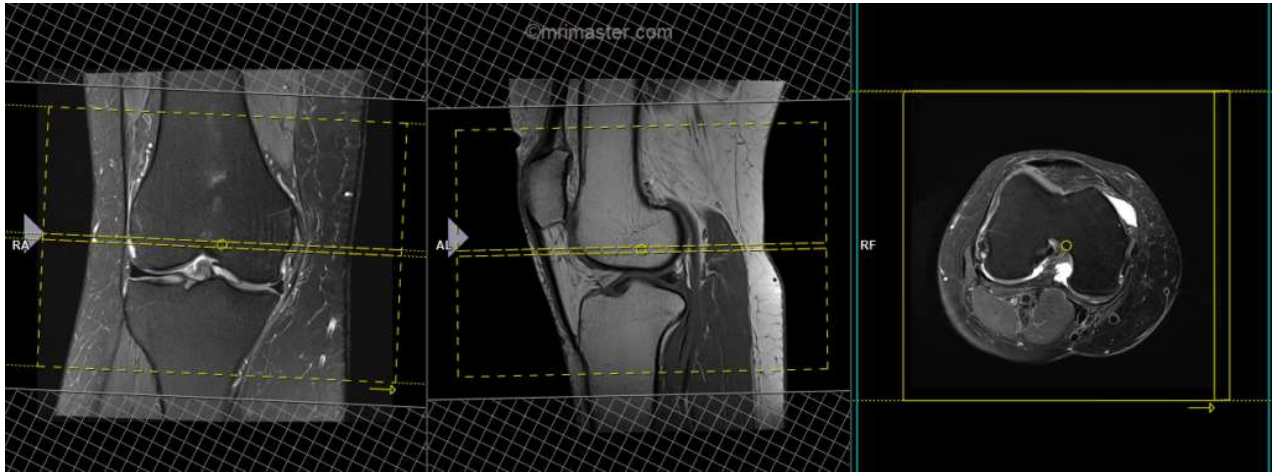
T1	T1 AX	ax	no	4	1	top
T1	T1 COR	cor	no	4	1	front

RECON (for MARS):

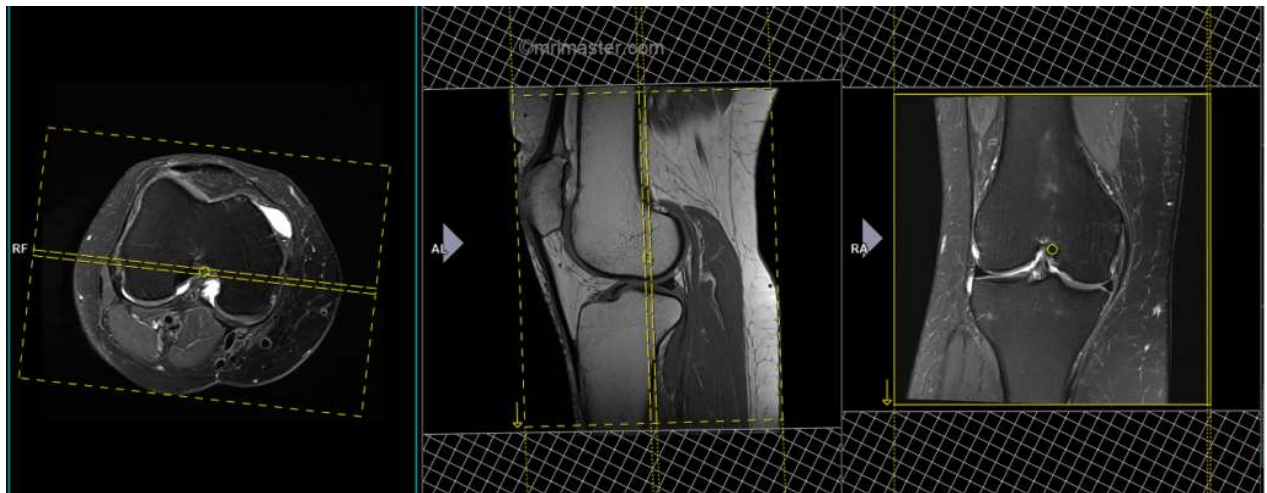
coronal subtractions

Knee Arthrogram:

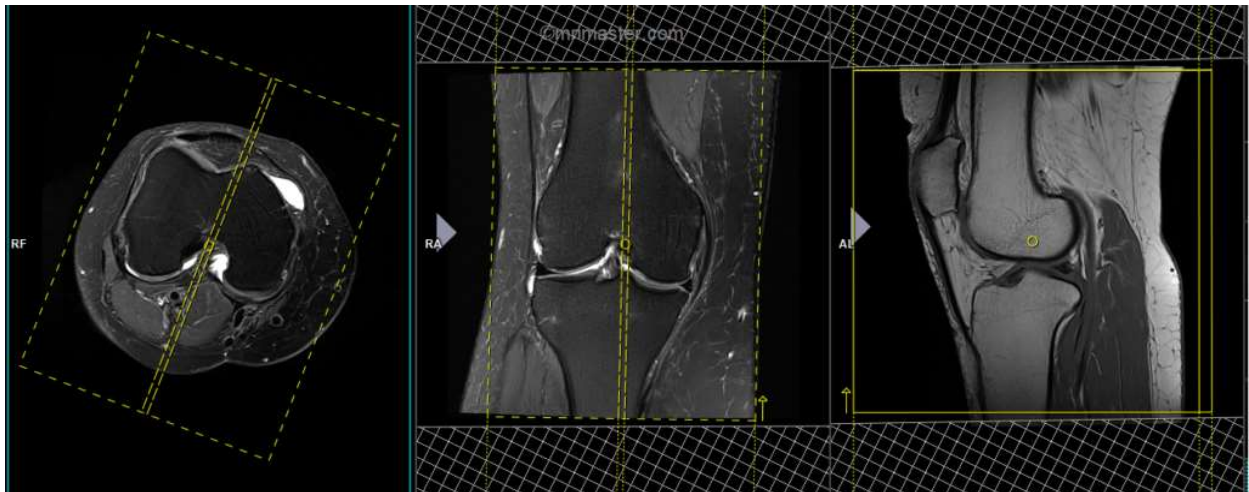
Pulse Sequence	PACS Name	plane	fat sat	slice (mm)	gap (mm)	first slice
T1	T1 FS AX	ax	yes	4	0.5	top
T1	T1 FS SAG	sag	yes	4	0.5	lateral
T1	T1 FS COR	cor	yes	4	0.5	front
T2	T2 FS AX	ax	yes	4	0.5	top
T2	T2 FS SAG	sag	yes	4	0.5	lateral
T2	T2 FS COR	cor	yes	4	0.5	front



axial FOV and angulation (parallel to the medial and lateral condyles in the coronal plane)



coronal FOV and angulation (parallel to the medial and lateral condyles in the axial plane)



sagittal FOV and angulation (parallel to ACL in the axial plane)