

Hip (Routine & MARS)

Updated

6/10/2021

For an order for without and with IV imaging, please confirm that the exam is not for tumor or arthrogram before proceeding.

Use field-of-view (FOV) and angulations as in the images on the **NEXT PAGE** (unless otherwise specified in protocol):

Go to MRIMaster.com for a guide of proper positioning.

Routine Hip:

Pulse Sequence	PACS Name	plane	fat sat	slice (mm)	gap (mm)	first slice	Field of View
T1	T1 COR	cor	no	5	1	front	whole pelvis
T1	T1 AX	ax	no	5	1	top	hip joint
T2	T2 FS AX	ax	yes	5	1	top	
STIR	STIR COR	cor	no	5	1.5	front	
T1	T1 SAG	sag	no	4.5	1	lateral	
T2	T2 FS SAG	sag	yes	4.5	1	lateral	

CONTRAST - 2 mL/sec standard dose gadolinium (0.2 mL/kg Clariscan or 0.1 mL/kg Gadavist) followed by 20 mL saline flush.

T1	T1 FS POST AX	ax	yes	5	1	top	hip joint
T1	T1 FS POST SAG	sag	yes	4.5	1	lateral	
T1	T1 FS POST COR	cor	yes	5	1.5	front	

MARS AND/OR PSEUDOTUMOR EVALUATION:

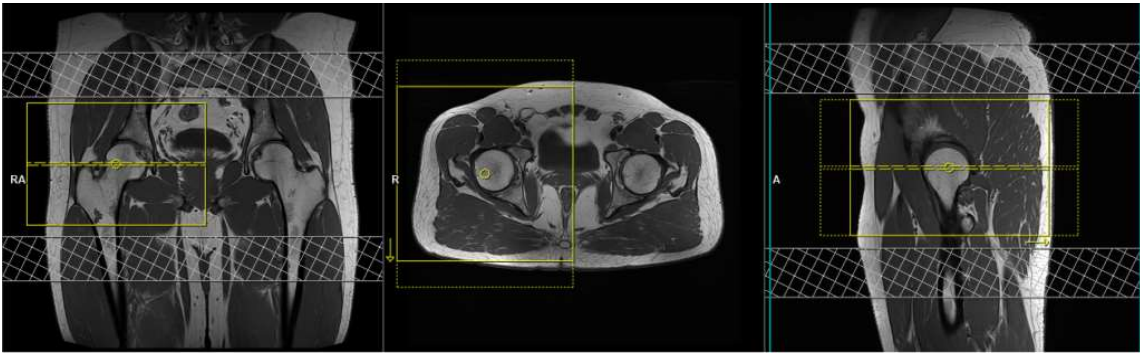
Pulse Sequence	PACS Name	plane	fat sat	slice (mm)	gap (mm)	first slice	Field of View
T1	T1 COR	cor	no	5	1	front	whole pelvis
T1	T1 AX	ax	no	6	1.5	top	hip joint
T2	T2 AX	ax	no	6	1.5	top	
STIR	STIR AX	ax	no	6	1.5	top	
T1	T1 COR	cor	no	5	1	front	
T2	T2 COR	cor	no	5	1	front	
PD	PD SAG	sag	no	5	1	lateral	

CONTRAST - 2 mL/sec standard dose gadolinium (0.2 mL/kg Clariscan or 0.1 mL/kg Gadavist) followed by 20 mL saline flush.

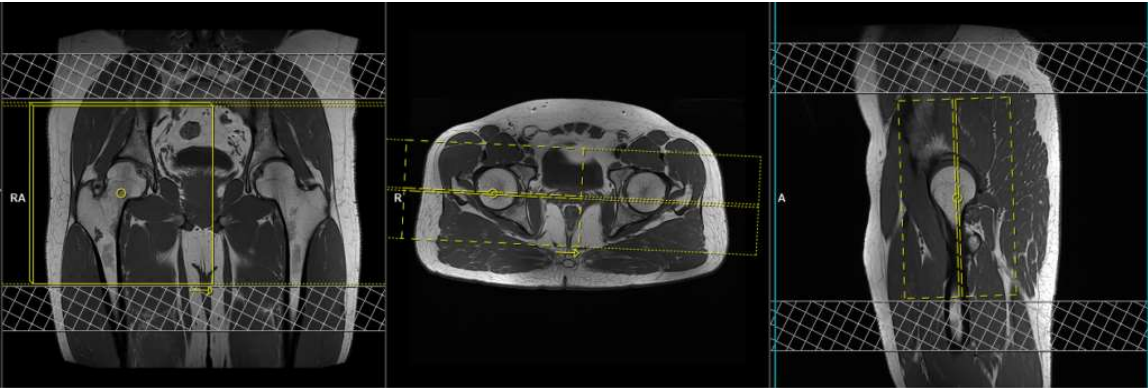
T1	T1 POST AX	ax	no	6	1.5	top	hip joint
T1	T1 POST COR	cor	no	5	1	and	
T1	T1 POST SAG	sag	no	4	0.5	lateral	

RECON (for MARS):

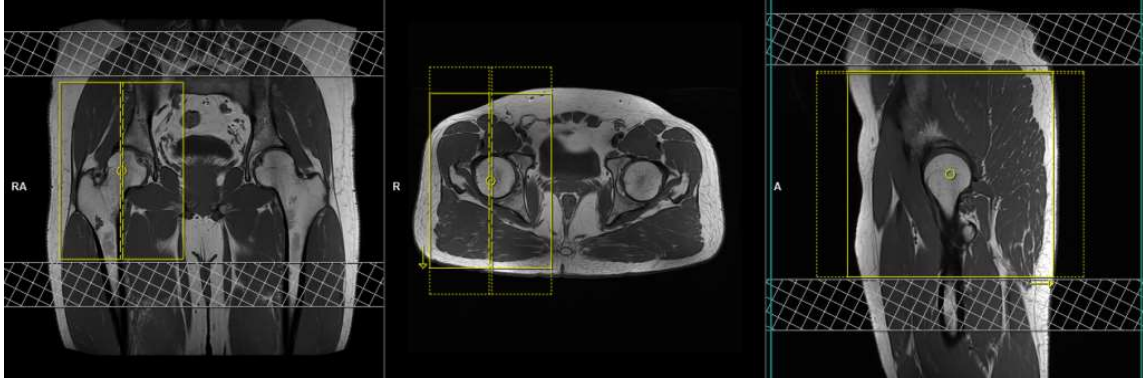
axial and coronal subtractions



axial FOV and angulation (horizontal across the femoral heads in the coronal plane)



hip coronal FOV and angulation (perpendicular to the acetabulum in the axial plane)



hip sagittal FOV and angulation (parallel across the femoral heads in the coronal plane)