

# CT Shoulder

Updated  
5/5/2024

Indications - trauma, fracture, dislocation, pain, bone tumor, soft tissue mass, infection, abscess, soft tissue gas, osteomyelitis, pre/post surgical evaluation.

Bill under CT Shoulder charges.

## GENERAL SCAN NOTES

Remove any metal from the imaging field of view.

Topogram - from above top of shoulder to proximal humerus.

Craniocaudal scan coverage - from above top of shoulder to proximal humerus (through prosthesis if present).

Include entire ipsilateral scapula in FOV.

Adjust FOV (field of view) on topogram to smallest without cropping anatomy.

IV Contrast: 100 mL Omnipaque-300, inject at 2.5 mL/sec, 60 secs scan delay.

For **GE scanners**, it is essential for the 1st recon thickness on the scanner to match the 1st recon thickness in this protocol book for the prescribed Noise Index to be valid. The 1st recon should generally be the thickest recon in the protocol.

## SIEMENS PARAMETERS & RECONS

	Scan Mode	kV	mAs	Care Dose	Care kV & Lvl	Pitch	Acq	Coll	Rot Time	Scan Time
Sensation 16	spiral	120	150	on	NA	0.80	16	0.75	1.0	10.4
Go Up 32	spiral	130	84	on	on 130	0.80	32	0.7	1.0	5.6
Sensation 64	spiral	120	150	on	NA	0.90	64	0.6	1.0	5.8
Definition 64	spiral	120	165	on	on	0.80	64	0.6	1.0	6.5
Go Top 64	spiral	130	100	on	on 130	0.80	64	0.6	1.0	3.3
Drive 128	spiral	120	116	on	on	0.80	128	0.6	1.0	3.3
Force 192	spiral	120	116	on	on	0.80	192	0.6	1.0	2.2

Name of Series	Thick	Interval	Kernel	Window	IR Lvl	Recon Direction
AX BONE	3.0	3.0	Br59 / B60f	bone/osteo	3	head/feet
COR BONE	3.0	3.0	Br59 / B60f	bone/osteo	3	front/back
SAG BONE	3.0	3.0	Br59 / B60f	bone/osteo	3	left/right
AX SOFT	3.0	3.0	Br40 / B31f	abdomen	3	head/feet

Send the above recons on the pre contrast scan (if without only) or on the post contrast scan (if IV given).

Send only the following recon on the pre contrast scan (if without and with).

AX SOFT PRE	3.0	3.0	Br40 / B31f	abdomen	3	head/feet
-------------	-----	-----	-------------	---------	---	-----------

Add the following recons for **arthrograms**:

COR SOFT	3.0	3.0	Br40 / B31f	abdomen	3	front/back
SAG SOFT	3.0	3.0	Br40 / B31f	abdomen	3	left/right

# CT Shoulder

## GE PARAMETERS & RECONS

	Scan Type	SFOV	kV	mA Range	Noise Index	Smart mA	Slice Thick	Beam Coll	Pitch	Speed	Rot Time	Dose Red	ASIR	Scan Time
LS 16	helical	large	120	100-440	12.50	on	2.5	10	0.938	9.37	0.5	NA	NA	5.3
Opt 540	helical	large	120	100-440	12.50	on	2.5	10	0.938	9.37	0.5	NA	NA	5.3
LS VCT 64	helical	large body	120	100-450	16.00	on	2.5	40	0.984	39.37	0.5	20	20	1.3
Disc VCT 64	helical	large body	140	100-610	14.14	on	2.5	40	0.516	20.625	0.6	NA	NA	2.9

Name of Series	Thickness	Interval	Recon Algorithm	Window Width/Level	Recon Direction
<b>AX BONE</b>	<b>2.5</b>	<b>2.5</b>	<b>bone full</b>	<b>2500/480</b>	<b>head/feet</b>
COR BONE	2.5	2.5	bone full	2500/480	front/back
SAG BONE	2.5	2.5	bone full	2500/480	left/right
AX SOFT	2.5	2.5	std full	400/40	head/feet

**Must be first recon.**

Send the above recons on the pre contrast scan (if without only) or on the post contrast scan (if IV given).

Send only the following recon on the pre contrast scan (if without and with).

AX SOFT PRE	2.5	2.5	std full	400/40	head/feet
-------------	-----	-----	----------	--------	-----------

Add the following recons for **arthrograms**:

COR SOFT	2.5	2.5	std full	400/40	front/back
SAG SOFT	2.5	2.5	std full	400/40	left/right

## PHILIPS PARAMETERS & RECONS

	Scan Mode	kV	Avg mAs	Dose Index	3D Dose	Pitch	Detect	Colli	Rot Time	Scan Time
Incisive 128	helical	120	129	22	on	0.80	64	0.625	1.00	3.1

Name of Series	Thick	Interval	Filter	Window	iDose	Recon Direction
AX BONE	3.0	3.0	YC	bone	3	head/feet
COR BONE	3.0	3.0	YC	bone	3	front/back
SAG BONE	3.0	3.0	YC	bone	3	left/right
AX SOFT	3.0	3.0	B	abdomen	3	head/feet

Send the above recons on the pre contrast scan (if without only) or on the post contrast scan (if IV given).

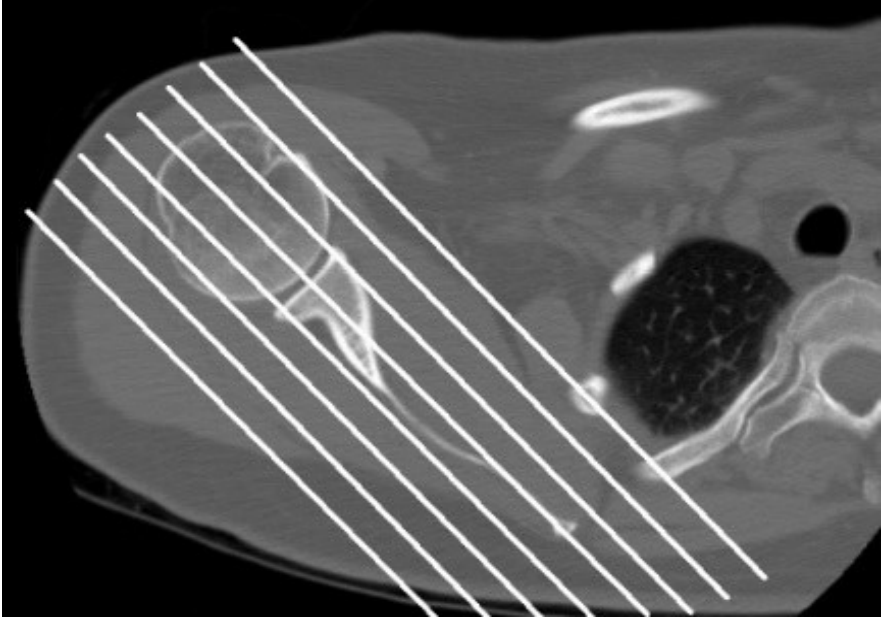
Send only the following recon on the pre contrast scan (if without and with).

AX SOFT PRE	3.0	3.0	B	abdomen	3	head/feet
-------------	-----	-----	---	---------	---	-----------

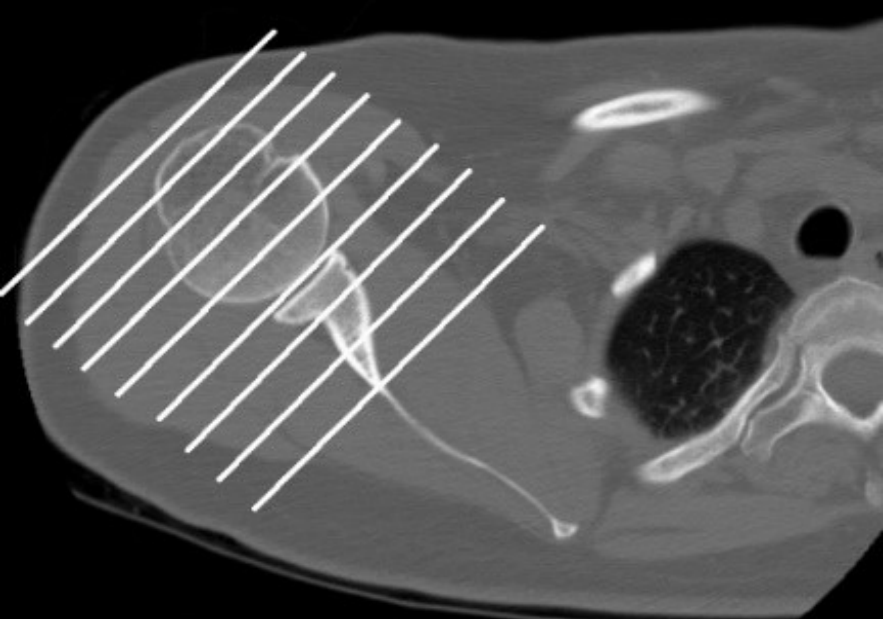
Add the following recons for **arthrograms**:

COR SOFT	3.0	3.0	B	abdomen	3	front/back
SAG SOFT	3.0	3.0	B	abdomen	3	left/right

**CT Shoulder**



**Coronal Plane**



**Sagittal Plane**