

CT Prophecy (TAR) Ankle

Updated
5/5/2024

Indications - pre surgical evaluation prior to ankle joint replacement.

Bill under CT LE w/o Contrast charge. Do not include separate knee and ankle charges.

GENERAL SCAN NOTES

Remove any metal from the imaging field of view.

Patient positioning (see images at bottom of page):

Have opposite leg bent at knee with ankle/foot out of way of ankle of interest.

Foot must be dorsiflexed with foot perpendicular to tibia.

Do not allow patient movement between or during the scans.

Topogram - from above knee through bottom of foot.

Craniocaudal scan coverage (see images at bottom of page):

Knee - 5 cm superior to and 5 cm inferior to joint.

Ankle - 10 cm superior to ankle joint through bottom of foot (including all toes).

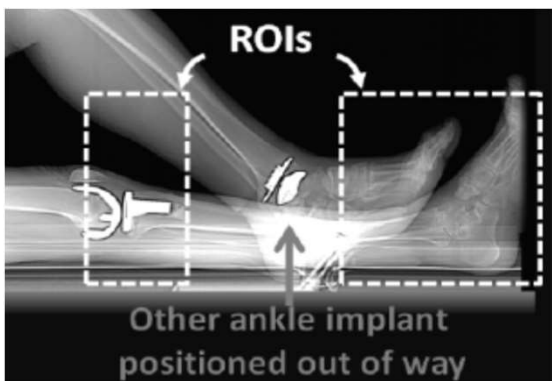
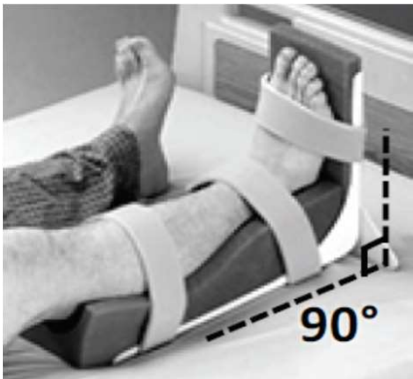
FOV of 280 mm preferred (must be <400 mm) using a 512 x 512 matrix squared.

Okay if soft tissue from contralateral extremity is included.

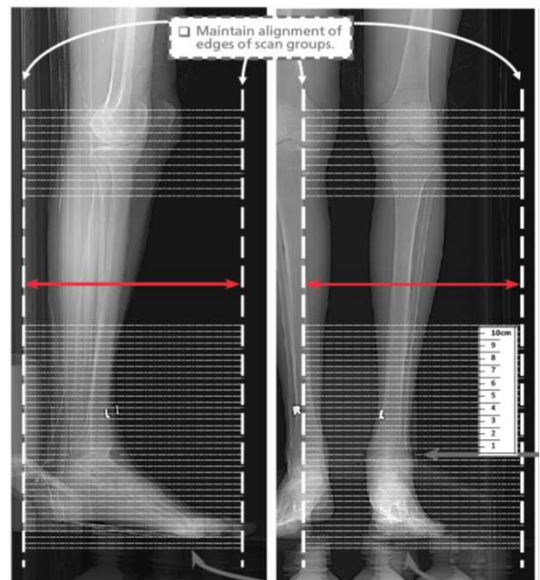
IV Contrast: 100 mL Omnipaque-300, inject at 2.5 mL/sec, 60 secs scan delay.

For **GE scanners**, it is essential for the 1st recon thickness on the scanner to match the 1st recon thickness in this protocol book for the prescribed Noise Index to be valid. The 1st recon should generally be the thickest recon in the protocol.

Prepare an uncompressed DICOM disc including the AP and lateral topograms, axial images of the knee and axial thin images of the ankle. This CD will need to go with the patient after the exam.



Ankle Positioning



Craniocaudal Scan Coverage

CT Prophecy (TAR) Ankle

SIEMENS PARAMETERS & RECONS

For Knee and Ankle scans:

	Scan Mode	kV	mAs	Care Dose	Care kV & Lvl	Pitch	Acq	Coll	Rot Time
Sensation 16	spiral	120	140	on	NA	0.55	16	0.75	1.0
Go Up 32	spiral	Sn 110	366	on	on 75	0.40	32	0.7	1.0
Sensation 64	spiral	120	140	on	NA	0.90	64	0.6	1.0
Definition 64	spiral	120	100	on	off	0.80	64	0.6	1.0
Go Top 64	spiral	Sn 110	898	on	on	0.40	64	0.6	1.0
Drive 128	spiral	120	70	on	off	0.80	128	0.6	1.0
Force 192	spiral	120	70	on	off	0.80	192	0.6	1.0

KNEE RECONS

Name of Series	Thick	Interval	Kernel	Window	IR Lvl	Recon Direction
AX KNEE BONE	3.0	3.0	Br59 / B60	bone/osteo	3	head/feet
COR KNEE BONE	3.0	3.0	Br59 / B60	bone/osteo	3	front/back
SAG KNEE BONE	3.0	3.0	Br59 / B60	bone/osteo	3	left/right

Prophecy specific recon.

ANKLE RECONS

AX ANKLE BONE	2.0	2.0	Br59 / B60	bone/osteo	3	head/feet
COR ANKLE BONE	2.0	2.0	Br59 / B60	bone/osteo	3	front/back
SAG ANKLE BONE	2.0	2.0	Br59 / B60	bone/osteo	3	left/right
AX ANKLE THINS	1.0	1.0	Br59 / B60	bone/osteo	3	head/feet

Prophecy specific recon.

CT Prophecy (TAR) Ankle

GE PARAMETERS & RECONS

For Knee and Ankle scans:

	Scan Type	SFOV	kV	mA Range	Noise Index	Smart mA	Slice Thick	Beam Coll	Pitch	Speed	Rot Time	Dose Red	ASIR
LS 16	helical	large	120	100-440	12.50	on	2.5	10	0.938	9.37	0.5	NA	NA
Opt 540	helical	large	120	100-440	12.50	on	2.5	10	0.938	9.37	0.5	NA	NA
LS VCT 64	helical	large body	120	100-450	16.00	on	2.5	40	0.984	39.37	0.5	20	20
Disc VCT 64	helical	large body	120	100-450	16.00	on	2.5	40	0.984	39.37	0.5	20	20

KNEE RECONS

Name of Series	Thickness	Interval	Recon Algorithm/Mode	Window Width/Level	Recon Direction
AX KNEE BONE	2.5	2.5	bone full	2500/480	head/feet
COR KNEE BONE	2.5	2.5	bone full	2500/480	front/back
SAG KNEE BONE	2.5	2.5	bone full	2500/480	left/right

Must be first recon.
Prophecy specific recon.

ANKLE RECONS

AX ANKLE BONE	2.5	2.5	bone full	2500/480	head/feet
COR ANKLE BONE	2.5	2.5	bone full	2500/480	front/back
SAG ANKLE BONE	2.5	2.5	bone full	2500/480	left/right
AX ANKLE THINS	0.625	0.625	bone plus full	2500/480	head/feet

Must be first recon.
Prophecy specific recon.

CT Prophecy (TAR) Ankle

PHILIPS PARAMETERS & RECONS

For Knee and Ankle scans:

	Scan Mode	kV	Avg mAs	Dose Index	3D Dose	Pitch	Detect	Colli	Rot Time
Incisive 128	helical	120	85	32	on	0.80	64	0.625	1.00

KNEE RECONS

Name of Series	Thick	Interval	Filter	Window	iDose	Recon Direction
AX KNEE BONE	3.0	3.0	YC	bone	3	head/feet
COR KNEE BONE	3.0	3.0	YC	bone	3	front/back
SAG KNEE BONE	3.0	3.0	YC	bone	3	left/right

Prophecy specific recon.

ANKLE RECONS

AX ANKLE BONE	2.0	2.0	YC	bone	3	head/feet
COR ANKLE BONE	2.0	2.0	YC	bone	3	front/back
SAG ANKLE BONE	2.0	2.0	YC	bone	3	left/right
AX ANKLE THINS	1.0	1.0	YC	bone	3	head/feet

Prophecy specific recon.